

## APPENDIX B

### TRAFFIC\*

#### Section 201 Parking prohibited at all times on the following streets.

(See section 20-1183)

- (1) South Main Avenue from its intersection with East Main Street margin of the Maiden Sportsmen Center Property.
- (2) East Union Street from its intersection with North Main Avenue to the eastern margin of the Superior Chair, Inc. property between the hours of 6:00 p.m. and 12:00 midnight.
- (3) South Second Avenue from its intersection with East Main Street to its intersection with East Boyd Street.
- (4) Parking is prohibited on both sides of West Cemetery Street from its easterly intersection with Carolina Avenue to its westerly intersection with North "C" Avenue.
- (5) Parking is prohibited on both sides of Union Street from its easterly intersection with North Second Avenue to its westerly intersection with North Main Avenue.
- (6) Parking is prohibited on both sides of Union Street from its easterly intersection with Island Ford Road to its westerly intersection with North 9th Avenue.
- (7) Parking is prohibited along both sides of North Main Avenue from its southerly intersection with East Main Street (U.S. 321) north for a distance of one hundred (100) feet.
- (8) Parking is prohibited on North Main Avenue as follows:
  - a. Upon the east side of North Main Avenue beginning at a utility pole located in the west property line of the lot described in Catawba County Tax Map No. 9M, Block 4, Lot 8, and running with the concrete street curb in a northerly direction for three hundred (300) feet.
  - b. Upon the west side of North Main Avenue beginning at a fire hydrant located on the east property line of the lot described in Catawba County Tax Map No. 9M, Block 3, Lot 4, and running with the concrete street curb in a northerly direction for two hundred forty (240) feet.
  - c. Upon both sides of North Main Avenue from its intersection with Mill Street north to its end. (Ord. No. 16-80, 7-7-80)
- (9) West Pine Street from its intersection with South "D" Avenue running west approximately 990 linear feet to its end, a point where West Pine Street extension begins. (Ord. No. 18-80, 8-4-80)

\*Cross reference—Any ordinance regulating traffic or vehicles at specific locations saved from repeal, § 1-107.

- (10) Both sides of East "J" Street from its intersection with U.S. Highway 321 to its intersection with Old Park Road. (Ord. No. 28-80, 12-15-80)
- (11) On the north side of West Murray Street from its easterly intersection with North "C" Avenue westerly to its intersection with Brentwood Drive. (Ord. No. 3-81, 5-18-81)
- (12) Both sides of South Seventh Avenue from its intersection with East Main Street south to its intersection with East Boyd Street. (Ord. No. 1-82, 2-15-82)
- (13) On the south side of West School Street from the intersection with North "D" Avenue to four hundred (400) feet west on West School Street. (Ord. No. 5-83, 8-15-83)
- (14) On the west side of Tutt Drive from South "D" Ave. to the dead end portion of the street. (Ord. No. 28-95, 9-18-95)

**Section 202** Parking prohibited between the hours of 1:00 a.m. and 6:00 a.m. upon any of the streets or portions of streets as follows.

(See section 20-1124)

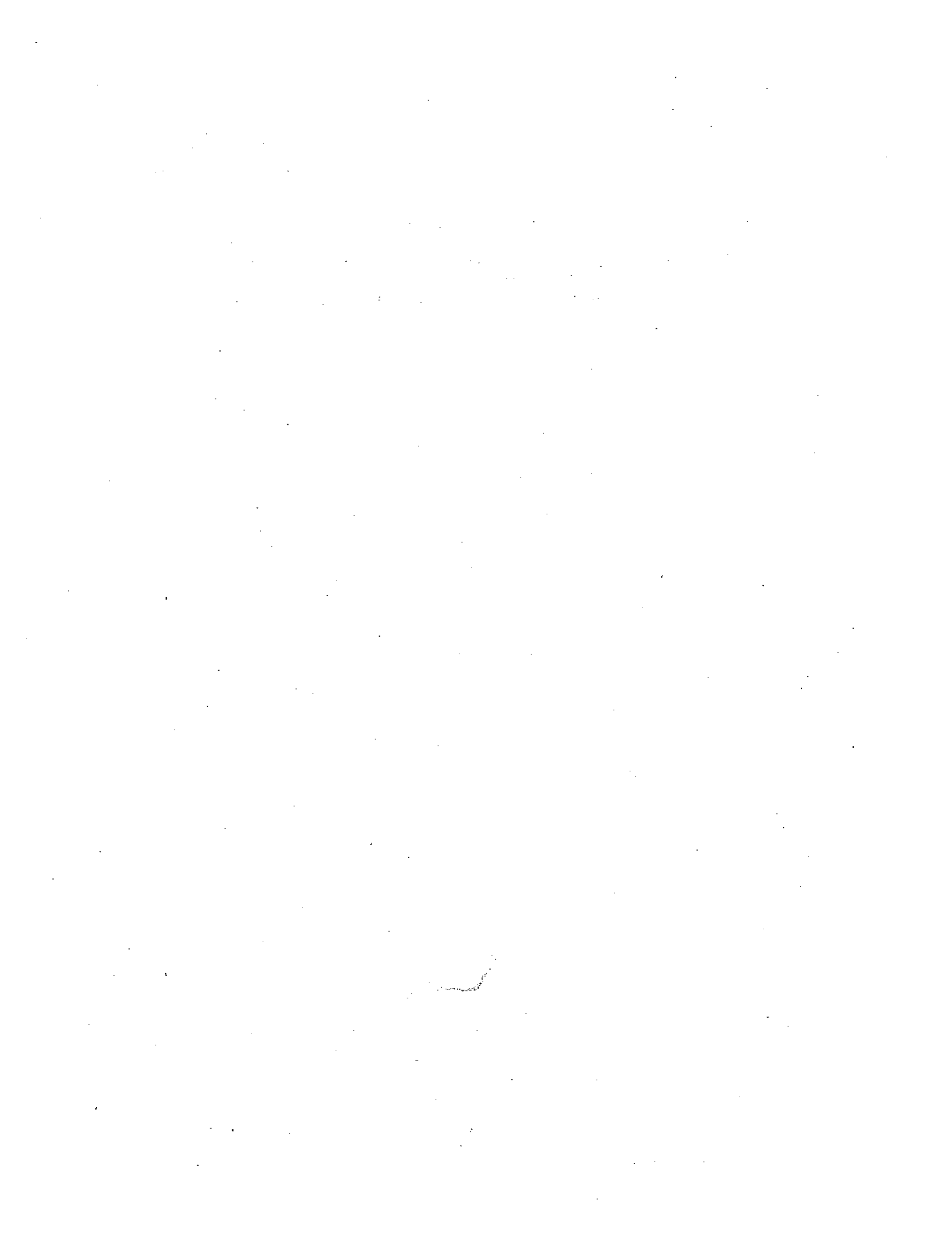
(Reserved)



**Section 203** Parking limited to two (2) hours between the hours of 6:00 a.m. and 6:30 p.m. on any day except Sundays and public holidays within the district or upon any of the streets as follows.

(See section 20-1184)

- (1) Both the North and South sides of Main Street beginning at "A" Avenue on West Main Street and from there in an eastern direction to and including the property in front of the Kayser-Roth Hosiery Company property on East Main Street.



**Section 204** Parking limited to one hour between the hours of 6:00 a.m. and 6:30 p.m. on any day except Sundays and public holidays within the district or upon any of the streets as follows.

(See section 20-1184)

(Reserved)



**Section 205** Parking limited to ten (10) minutes.

(See section 20-1184)

(Reserved)



**Section 206** The following streets or portion of streets shall be reserved as stands for the specific purpose and at the exact location described in the following.

(See section 20-1163)

(Reserved)

1992

1993

**Section 207 Diagonal parking.** All vehicles shall be parked at an angle of approximately forty-five (45) degrees with the curb on the following streets or portions thereof.

(See section 20-1102)

(Reserved)



**Section 208 Intersections at which "stop" is required before entering.**

(See section 20-1141)

- (1) On Klutz Street at Carolina Avenue;
- (2) At the intersection of Klutz Street and North Main Avenue on both the East and West sides of North Main Avenue;
- (3) On the South side of North First Avenue at Klutz Street;
- (4) At the intersection of Klutz Street and North Second Avenue on both the East and West sides of Klutz Street;
- (5) At the intersection of Klutz Street and North Fourth Avenue on the East side of North Fourth Avenue;
- (6) At the intersection of Klutz Street and North Fifth Avenue on both the North and South sides of Klutz Street;
- (7) At the intersection of Klutz Street and North Eighth Avenue on the South side of Klutz Street;
- (8) At the intersection of Klutz Street and North Ninth Avenue on both the North and South sides of Klutz Street;
- (9) At the intersection of North Tenth Avenue and Klutz Street on both the North and South sides of Klutz Street;
- (10) At the intersection of Klutz Street and North Eleventh Avenue on the South side of Klutz Street;
- (11) At the intersection of Klutz Street and Island Ford Road on the West side of Island Ford Road;
- (12) At the intersection of North First Avenue and Union Street on the North side of Union Street;
- (13) At the intersection of North Second Avenue and East Union Street on both the North and South sides of East Union Street and on the East and West sides of North Second Avenue;
- (14) At the intersection of East Union Street and North Third Avenue on both the North and South sides of East Union Street;
- (15) At the intersection of East Union Street and North Fourth Avenue on both the North and South sides of East Union Street;
- (16) At the intersection of North Fifth Avenue and East Union Street on the South side of East Union Street;
- (17) At the intersection of North Sixth Avenue and East Union Street on both the North and South sides of East Union Street;
- (18) At the intersection of North Eighth Avenue and East Union Street on both the North and South sides of East Union Street;

- (19) At the intersection of North Ninth Avenue and East Union Street on both the North and South sides of East Union Street;
- (20) At the intersection of North Tenth Avenue and East Union Street on both the North and South sides of East Union Street;
- (21) At the intersection of North Eleventh Avenue and East Union Street on both the North and South sides of East Union Street;
- (22) At the intersection of East Union Street and Island Ford Road on the West side of Island Ford Road;
- (23) At the intersection of East Union Street and North Main Avenue on the East side of North Main Avenue;
- (24) At the intersection of East Main Street and First Avenue on the South side of East Main Street;
- (25) At the intersection of East Main Street and Second Avenue on both the North and South sides of East Main Street;
- (26) At the intersection of East Main Street and Third Avenue on both the North and South sides of East Main Street;
- (27) At the intersection of Fourth Avenue on both the North and South sides of East Main Street;
- (28) At the intersection of East Main Street and Fifth Avenue on both the North and South sides of East Main Street;
- (29) At the intersection of East Main Street and Sixth Avenue on both the North and South sides of East Main Street;
- (30) At the intersection of East Main Street and Eighth Avenue on both the North and South sides of East Main Street;
- (31) At the intersection of East Main Street and Ninth Avenue on both the North and South sides of East Main Street;
- (32) At the intersection of East Main Street and Tenth Avenue on both the North and South sides of East Main Street;
- (33) At the intersection of East Main Street and Eleventh Avenue on both the North and South sides of East Main Street;
- (34) At the intersection of East Main Street and Twelfth Avenue on both the North and South sides of East Main Street;
- (35) At the intersection of West Main Street and Railroad Avenue on the South side of West Main Street;
- (36) At the intersection of West Main Street and A Avenue on both the North and South sides of West Main Street;

- (37) At the intersection of West Main Street and B Avenue on the South side of West Main Street;
- (38) At the intersection of West Main Street and D Avenue on the North side of West Main Street;
- (39) At the intersection of East Boyd Street and South Main Avenue on the East side South Main Street;
- (40) At the intersection of East Boyd Street and First Avenue on both the North and South sides of Boyd Street;
- (41) At the intersection of East Boyd Street and Second Avenue on both the North and South sides of East Boyd Street and on both the East and West sides of South Second Avenue;
- (42) At the intersection of East Boyd Street and South Third Avenue on both the North and South sides of East Boyd Street;
- (43) At the intersection of East Boyd Street and South Fourth Avenue on both the North and South sides of East Boyd Street;
- (44) At the intersection of East Boyd Street and South Fifth Avenue on both the North and South sides of East Boyd Street;
- (45) At the intersection of Boyd Street and Sixth Avenue on the North side of East Boyd Street;
- (46) At the intersection of East Boyd Street and South Eighth Avenue on both the North and South sides of East Boyd Street;
- (47) At the intersection of East Boyd Street and North Ninth Avenue on the North side of East Boyd Street;
- (48) At the intersection of East Boyd Street and North Tenth Avenue on the North side of East Boyd Street;
- (49) At the intersection of East Boyd Street and North Eleventh Avenue on the North side of East Boyd Street;
- (50) At the intersection of East Boyd Street and North Twelfth Avenue on the North side of East Boyd Street;
- (51) At the intersection of East Boyd Street and U.S. Highway No. 321 on the West side of U.S. Highway No. 321;
- (52) At the intersection of North Main Avenue and East Church Street on the East side of North Main Avenue;
- (53) At the intersection of North Main Avenue and Hoyle Street on the East side of North Main Avenue;
- (54) At the intersection of East Murray Street and North Main Avenue on both the East and West sides of North Main Avenue;

- (55) At the intersection of North Main Avenue and Mill Street on the North side of Mill Street;
- (56) At the intersection of North Main Avenue and Lattimore Street on the West side of North Main Avenue;
- (57) At the intersection of Carolina Avenue and Lattimore Street on the East side of Carolina Avenue;
- (58) At the intersection of Carolina Avenue and West Church Street on the West side of Carolina Avenue;
- (59) At the intersection of North Fourth Avenue and East School Street on the East side of North Fourth Avenue;
- (60) At the intersection of North Fourth Avenue and Manufacturing Street on the East side of North Fourth Avenue;
- (61) At the intersection of North Fifth Avenue and Manufacturing Street on the North side of Manufacturing Street;
- (62) At the intersection of Manufacturing Street and North Sixth Avenue on the West side of North Sixth Avenue;
- (63) At the intersection of North Second Avenue and Cemetery Street on the South side of Cemetery Street;
- (64) At the intersection of South Second Avenue and Carpenter Street on the East side of South Second Avenue;
- (65) At the intersection of South Third Avenue and Carpenter Street on both the North and South sides of Carpenter Street;
- (66) At the intersection of South Fourth Avenue and Carpenter Street on both the North and South sides of Carpenter Street;
- (67) At the intersection of South Fifth Avenue and Carpenter Street on the West side of South Fifth Avenue;
- (68) At the intersection of South Fifth Avenue and East Pine Street on the West side of South Fifth Avenue;
- (69) At the intersection of South Fourth Avenue and East Pine Street on the North side of East Pine Street;
- (70) At the intersection of South First Avenue and East Pine Street on the North side of East Pine Street;
- (71) At the intersection of East Holly Street and Sunset Drive on the South side of East Holly Street;
- (72) At the intersection of West Boyd Street and Railroad Avenue on the West side of Railroad Avenue;
- (73) At the intersection of West Boyd Street and South C Avenue on both the East and West sides of South C Avenue.

- (74) At the intersection of Second Avenue and Klutz Street traveling east and west and north and south making this a four-way stop.
- (75) At the intersection of Boyd Street and Fifth Avenue.
- (76) Four-way stop at the intersection of north Fourth Avenue and Union Street.
- (77) Four-way stop at the intersection of Tenth Avenue and Klutz Street.  
(Ord. of, 10-87, § 1, 11-2-87; Ord. No. 19-90, 12-3-90; Ord. No. 1-91, 1-7-91; Ord. No. 2-91, 2-4-91; Ord. No. 10-97, 3-17-97; Ord. No. 16-2003, 6-2-03)

**Section 209 One-way streets.**

(See section 20-702)

- (1) On East School Street from intersection of North Main Avenue to intersection of North 1st Avenue;
- (2) On North 1st Avenue from intersection of East School Street to intersection of East Church Street.
- (3) Highway 321.
- (4) East Church Street from North First Avenue West to North Main Avenue. (Parking will be allowed on the North side of East Church St. only.)
- (5) South First Avenue between East Main Street and Boyd Street is designated for one-way traffic running in a southerly direction from East Main Street to Boyd Street.  
(Ord. No. 10-79, 9-4-79)



**Section 210** Left turns to be made to the left of the center at the following intersections.

(See section 20-602)

(Reserved)



**Section 211 No left turns at following intersections.**

(See section 20-602)

(Reserved)



**Section 212 No right turns at following intersections.**

(See section 20-602)

(Reserved)



**Section 213 No complete or "U" turns at following intersections.**

(See section 20-602)

(Reserved)



**Section 214** Twenty mile per hour speed limit on the following state maintained streets.

(See section 20-502)

(Reserved)



**Section 215 Twenty-five mile per hour speed limit on the following state maintained streets**

(See section 20-502(a)(2))

- (1) Main Street (SR 2007) from South "B" Avenue, eastward to U.S. 321 (Newton Road).
- (2) Main Avenue (SR 2003) from Boyd Street, northward to U.S. 321 (Main Street).
- (3) Main Street (U.S. 321) from Newton Road (U.S. 321), eastward to First Avenue. (Ord. No. 14-84, 12-3-84)

(See section 20-502(a)(2))

- (1) Main Street from a point 0.05 mile west of SR 2005 ("C" Street), eastward to U.S. 321 (Carolina Street). (Ord. of 1-31-92)



**Section 216** Thirty mile per hour speed limit on the following state maintained streets.

(See section 20-502(a)(3))

(Reserved)



**Section 217** Forty mile per hour speed limit on the following state maintained streets.

(See section 20-502(a)(4))

(Reserved)



**Section 218** Forty-five mile per hour speed limit on the following state maintained streets.

(See section 20-502(a)(5))

(Reserved)



**Section 219** Fifty mile per hour speed limit on the following state maintained streets.

(See section 20-501(a)(6))

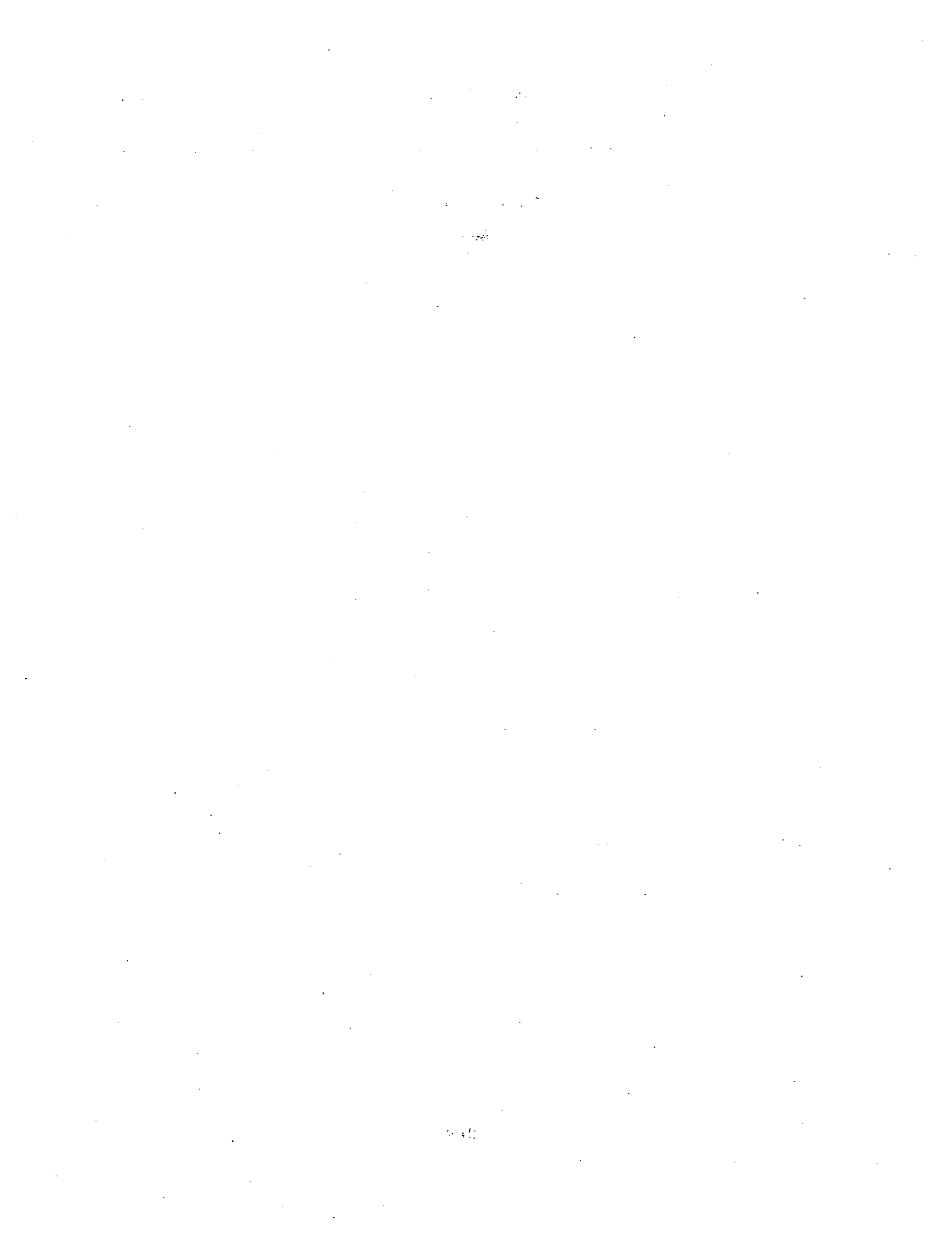
(Reserved)



**Section 220 Fifty-five mile per hour speed limit on the following state maintained streets.**

(See section 20-502(a)(7))

(Reserved)



**Section 221 Twenty mile per hour speed limit on the following town maintained streets.**

(See section 20-502(b)(1))

(Reserved)

- (1) Old Tavern Lane. (Ord. No. 3-92, 4-6-92)



**Section 222 Twenty-five mile per hour speed limit on the following town maintained streets.**

(See section 20-502(b)(2))

- (1) East Main Street between South Main Street eastward to First Avenue. (Ord. No. 4-84, § 1, 6-18-84)
- (2) SR 2007 (Main Street) from a point 0.05 mile west of SR 2005 ("C" Ave.), eastward to U.S. 321 (Carolina Avenue). (Ord. No. 12-91, 12-16-91)
- (3) Springhill Lane, Foxwood Drive, all of Old Park Road, Wellsby Court, Dundee Court and Wildwood Court. (Ord. No. 11-92, 7-20-92)



**Section 223** Thirty mile per hour speed limit on the following town maintained streets.

(See section 20-502(b)(3))

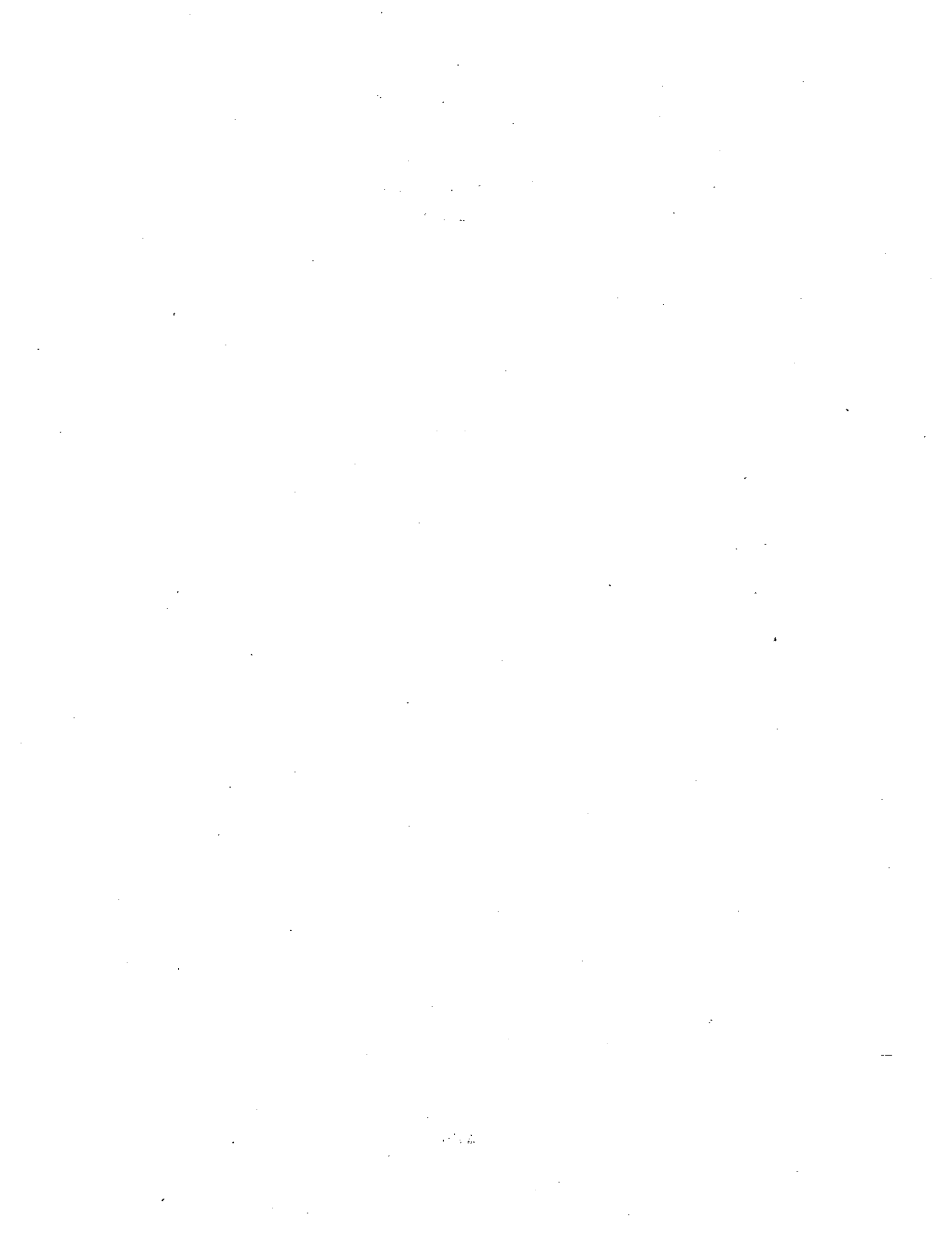
(Reserved)



**Section 224** Forty mile per hour speed limit on the following town maintained streets.

(See section 20-502(b)(4))

(Reserved)



**Section 225 Forty-five mile per hour speed limit on the following town maintained streets.**

(See section 20-502(b)(5))

(Reserved)



**Section 226** Fifty mile per hour speed limit on the following town maintained streets.

(See section 20-502(b)(6))

(Reserved)



**Section 227 Fifty-five mile per hour speed limit on the following town maintained streets.**

(See section 20-502(b)(7))

(Reserved)



## APPENDIX C

### ANNEXATIONS\*

Ord. No.	Date Passed	Description
2-80	1-21-80	Lots nos. 110, 111, 112, and 113, being owned by James O. and Suellen R. McDaniel.
5-80	3-3-80	Territory containing 5.05 acres, being all of Lots 1, 2, and 3 of Block D of Sherwood Forest Subdivision, and all of Lots 9, 10, 11, 13, 14, and 15 of the Theodore Bumgarner Lands.
7-80	3-17-80	Property owned by Mr. William E. Abernethy, 12,380 acres.
8-80	5-5-80	Property containing 45.759 acres beginning on the south side of State Road 2005.
3-82	6-28-82	Territory containing 46.749 acres, beginning on the north side of SR 1869.
4-83	6-20-83	Territory containing 8.586 acres, set forth in a plat entitled Proposed 1983 Annexation Town of Maiden.
10-86	5-5-86	Property containing 17.001 acres, beginning at an existing iron pin at the northwest corner of the Lora E. Coulter property and the northeast corner of the Loy Coulter property.
14-86		Property containing .74 acres and 2.6 acres beginning at an iron pin on the southeast margin of the right-of-way of Providence Mill Road, the northwest corner of William M. Reynolds.
15-86	11-3-86	Property containing 2.07 acres beginning at an iron pin at the southwestern corner of the Walter Shrum Property.
17-86	12-1-86	Two (2) tracts shown as parcel 66 N-2-19A on the Catawba County Tax Maps.
18-86	12-1-86	Tax parcel 7k-1-25.
19-86	12-1-86	Tax parcel 13m-3-1.
20-86	12-15-86	Property consisting of 14.2 acres beginning at an iron pin in the eastern right-of-way margin of South Eleventh Avenue.

\***Charter references**—Original corporate limits of the town, Art. I, Div. 1, § 2; corporate limits, Art. II, § 2.

Supp. No. 2

MAIDEN TOWN CODE

Ord. No.	Date Passed	Description
1-88	3-21-88	Property containing 1.04 acres plus or minus, beginning at an existing PK nail with the paved portion of Providence Mill Road, State Road 1972.
6-88	6-20-88	Tax parcels 13m-2-4c, 7k-4-1, 7k-4-2, 7k-4-2A, 7k-4-5, 7k-4-65, 7k-4-66, 7k-4-68, 7k-4-69, 7k-4-70, 7k-4-71, 7k-4-72, 7k-4-73, 7k-4-76, 7k-4-77, 7k-4-78, 7k-4-79, 7k-4-83, 7k-4-84, 7k-4-85, 7k-4-86, 7k-4-90, 7k-4-62, 7k-4-63, 7k-4-64, 7k-4-89, 7k-4-87, 7k-4-88, 7k-4-67, 7k-4-82, 7k-4-81, 7k-4-80, 7k-4-79, 7k-4-2D, 13m-2-4D, 7k-4-5A, 7k-4-5B, 7k-4-5C, 7k-4-5D, 13m-2-4A.
10-88	10-17-88	Property containing 13.29 acres, plus or minus, beginning at a point in the centerline of Providence Mill Road, State Road 1872.
13-88	11-21-88	Property containing 10.078 acres, plus or minus, beginning at an existing iron pin in the eastern right-of-way margin of U.S. Highway 321 north of the town.
12-89	10-30-89	Property containing 309.95 acres, plus or minus, beginning at the southwest corner of the property of James Wright.
13-89	12- 4-89	Property containing 39.65 acres, plus or minus, beginning at a point in the centerline intersection of US 321 and the north right-of-way of Sherwood Drive.
14-89	10-30-89	Property beginning at a point in Providence Mill Road.
15-89	10-30-89	Property containing 1½ acres, plus or minus, beginning at an iron stake in the middle of Island Ford Road.